



HI CREEPS! -

IT'S YOUR OLD PAL THE YELLOW PHANTOM HERE WITH ANOTHER SCAN FROM

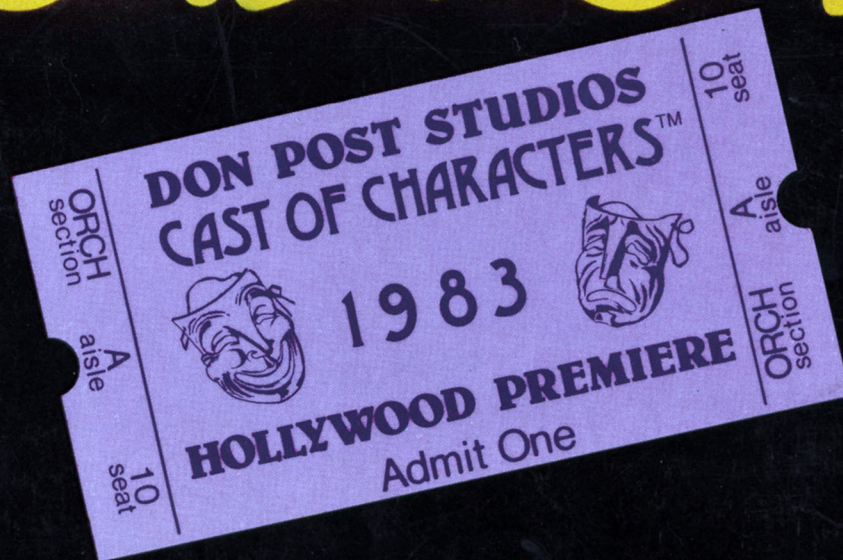
THE BLOOD-CURDLING

BLOG OF

MONSTER MASKS

WWW.MONSTERMASKS.BLOGSPOT.COM

DON POST STUDIOS



Don Post Studios Cast of Characters™ 1 9 8 3 Hollywood Premiere



REPORTER: "Good evening ladies and gentlemen! This is your **Don Post Studios™** reporter **Mack Skerade** speaking. Well, this is the night we've all been waiting for: **The Hollywood Premiere** of the **1983 Don Post Studios Cast of Characters™ Collection!** After many months of planning, we are proud to present our new line of Classic Masquerade Characters.

"The crowd is nervous here in North Hollywood as the tension and excitement mounts . . . wait . . . here comes the limousine which should carry the man behind the masks. Yes, it's Don Post. His father, the late Don Post Sr. was the founder of the Latex Mask Business in the 1930's.

"I'm going to try and get a few words with him. Mr. Post, would you like to comment on this festive occasion?"

DON: "Well, I'd just like to say that we at **Don Post Studios** are proud and honored to have been chosen licensees by some of the largest and most prestigious film companies around. For more than forty years, we've been striving to perfect the art of mask making and we're happier than ever to be so widely accepted by the Hollywood Film Community."

REPORTER: "Thank you for speaking with us, Don. We'll be seeing the licensed characters next, but first here's a list of those studios and the movies which will be featured for **1983** by **Don Post Studios.**"

Universal City Studios, Inc.
Amblin Productions
Steven Spielberg / Kathleen Kennedy
E.T.™ The Extra-Terrestrial

Lucasfilm Ltd.
George Lucas
Star Wars®

Henson Associates, Inc.
Jim Henson
The Dark Crystal™

Universal City Studios, Inc.
Pumpkin Pie Productions
Debra Hill / John Carpenter
Halloween III: The Season of the Witch™

Lone Star Productions
Bill Malone
Scared to Death™

Universal City Studios, Inc.
Classic Character Collection

20th Century-Fox Film Corp.
Planet of the Apes™





REPORTER: "Welcome back to the Gala Premiere. As you can see, the first of our licensed masks is arriving! It is America's most beloved **Extra-Terrestrial, E.T.™***. The movie **E.T.**, as you know, sky rocketed to record breaking revenues after it's opening days in May 1982. **Steven Spielberg's** tale of this loveable alien has captured the hearts and imaginations of more than 100,000,000 Americans. He appeals to young and old alike and has generated a following of millions who are purchasing **E.T.** products of every description. **E.T.** is a milestone motion picture directed by that master story teller who terrified us with **Jaws**, amused us with **1941** and amazed the movie going public with **Close Encounters of the Third Kind** and dazzled us with **Raiders of the Lost Ark**.

"Don Post Studios has created the ultimate **E.T.** product. Using the original **E.T.** as a model, our sculptors recreated the **E.T. Full Latex Headpiece**. Authentically detailed, styled with lifelike eyes, it truly captures the heartwarming characteristics of the original, loveable Extra-Terrestrial."



2029 E.T.™ THE EXTRA-TERRESTRIAL



SCENE FROM THE MOVIE



"Our **E.T.™ Mask** is featured this year in a brightly colored, eye-catching box. When stacked, it creates an exciting visual display and promotion effect, certain to attract your customers."

© 1982 Universal City Studios, Inc. All Rights Reserved.
*A trademark of and licensed by Universal City Studios, Inc.



REPORTER: "Here they are, ladies and gentlemen, straight from a galaxy far, far, away, our popular '**STAR WARS® Collection**.' In 1977 a new era began for the motion picture industry. One man and one film inspired a nation of movie audiences to demand a new type of entertainment. The man was **George Lucas** and the film was **STAR WARS**. Mr. Lucas captured excitement and imagery never before seen on the screen. His story of the Empire versus The Rebel Alliance transported viewers to another time on other planets. Alien worlds with problems that make our own seem insignificant. From this beginning the saga continued, first with **The Empire Strikes Back™** and this year with **Return of the Jedi™**. George Lucas created a dream and these fine masks embody that dream for all time.

REPORTER: "Each of our fine **STAR WARS®** characters will come to you in a new **Point-of-Purchase Display Box**. This new packaging concept features a built-in headform which makes an ideal display."

REPORTER: "Yoda, The Jedi Master™, is a Latex Rubber Overhead Mask which features life-like eyes and tufts of real hair. Yoda™, to be seen again in **Return of the Jedi™**, has always been a crowd pleaser."



2007 YODA, THE JEDI MASTER™



2002 STORMTROOPER™

2001 DARTH VADER™

2003 CHEWBACCA™

Coming Soon!
STAR WARS:
Return of
the Jedi™
HEADPIECES!

REPORTER: "This trio requires no introduction. They are three of the most recognizable film characters in history. Our **Stormtrooper™ Mask** is crafted in semi-rigid vinyl appointed with authentic detailing. The Dark Lord of the Sith, **Darth Vader™**, is made in two pieces of shatter resistant plastic. This two piece method of construction duplicates the original film helmet and our velcro closure allows for size adjustment. **Chewbacca™**, The "Wookiee" is a Full, Overhead Latex Mask with a multi-toned coiffure of hand applied Natural Hair Fibre.





REPORTER: "A hush has fallen over the crowd as three extraordinary new mask characters arrive. They're **Aughra™**, **Pod Peasant™**, and **Skeksis™**, from **Jim Henson's film, The Dark Crystal™**. This feature length film which premiered in December 1982 is a bold experiment from Jim Henson, Frank Oz, and Co-producer Gary Kurtz. The cast consists entirely of creatures, so lifelike that you are transported into the living supernatural **Land of Froud**. These magical characters came from the creative imagination of artist **Brian Froud** and were then transformed into three-dimensional moving characters by the wizards at Henson Associates. **The Dark Crystal** is one of the most exciting fantasy films in history, and as you can see, we at **Don Post Studios** have captured each creatures' mystique in these beautifully **Handcrafted Headpieces**.

"**Aughra™**, The Keeper of Secrets, **The Pod Peasant™** and **Skeksis™** are all Handmade, Full Overhead Latex Masks with Natural Hair Fibre."

© Henson Associates, Inc. 1983. The Dark Crystal and character names are a trademark of Henson Associates, Inc. All Rights Reserved.



2031 AUGHRA™



2032 POD PEASANT™



2035 SKEKSIS™



REPORTER: "They're here ladies and gentlemen! **Pumpkin Head™**, **The Green Witch™** and the **Skull™**. They are the **Halloween III: Season of the Witch™** characters upon which **John Carpenter** and **Debra Hill's** suspenseful film was based. Don Post Studios made these three masks for the movie which was filmed in part at the Post facility. These ghoulish characters are painted in dynamic fluorescent colors. The **Skull** actually 'Glow in the Dark', and **The Green Witch** is featured with a dramatic green hood.



2027 GREEN WITCH™

2028 PUMPKIN HEAD™

2026 SKULL™



2023 SYNGENOR™

REPORTER: "Our next licensed arrival is almost too terrifying to describe. He's the Synthesized Genetic Organism, **Syngenor™**, from **Bill Malone's** horror thriller **Scared to Death™**. This original design of Mr. Malone's has received world wide acclaim as one of history's finest movie monsters. Recreated in detail, Bill Malone personally sculpted this Don Post Mask."

TM: © Malone Productions / Lone Star Pictures 1982



REPORTER: "There's almost a reverence among the crowd now as our last few licensed characters arrive. These faces are so recognizable, so classic, that **Don Post** is calling this new line the **Classic Character Collection**. These visages have withstood the test of time. Each design holds a dramatic importance in the history of Cinema. Here comes **Frankenstein™**, **The Phantom of the Opera™**, **The Creature from the Black Lagoon™**. Listen to the crowd roar as these favorite monsters pass by."

© 1963 Universal City Studios, Inc. All Rights Reserved.
*A trademark of and licensed by Universal City Studios, Inc.

Don Post, Sr.



1201 FRANKENSTEIN™*



1204 CREATURE FROM THE BLACK LAGOON™*



1203 PHANTOM OF THE OPERA™*

HOLLYWOOD



REPORTER: "Here they come, the last of our **Classic Characters**. They are the **Academy Award** winning designs from the **Planet of the Apes™**: **Cornelius™**, **Dr. Zaius™**, and the **Gorilla Warrior™**. Each is a collector's item because of their popularity and authenticity. **Handcrafted** with great care, these masks are truly **Classics**, ladies and gentlemen, recreated for you by Don Post Studios!

PLANET OF THE APES™

© 1968 20th Century-Fox Film Corporation. Trademarks owned by Twentieth Century-Fox Film Corporation and used by Don Post Studios under license. All Rights Reserved.



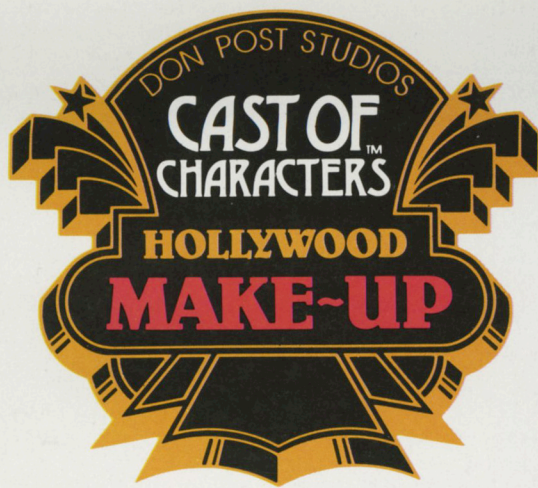
1207 CORNELIUS™



1209 GORILLA WARRIOR™



1208 DR. ZAIUS™



REPORTER: "Now you can recreate the magic of Hollywood make-up techniques with **Don Post Studios 'Cast of Characters'™ Hollywood Make-Up Kits**. Each kit contains enough quality F.D.A. approved ingredients to complete five dramatic character designs. For professional results, each kit comes complete with the necessary tools and illustrated instructions.

"... And don't forget **Don Post Studios** offers a full line of **Make-Up Accessories**."

★ **Clens™**, Hollywood's most trusted Make-Up and Spirit Gum Remover. ★ A colorful array of ready to use **Natural Hair Fibre**. ★ **Imagi-nails™**, long, sleek fingernails for a truly mysterious mood. ★ **Liquid Latex Rubber**, a reliable adhesive for applying accessories or create horrifying scars, burns, and old age effects. ★ **Latex Rubber Noses**, Custom **Bald Caps** and Economy **Skin Heads** add that finishing touch to your character theme. ★ And our new **See-Through Pirate Eye Patch** decorated with a fore-boding Skull and Cross Bones.

NEW!



MAKE-UP KITS: 4511 Casualty, 4512 Clown, 4513 Vampire, 4514 Witch.



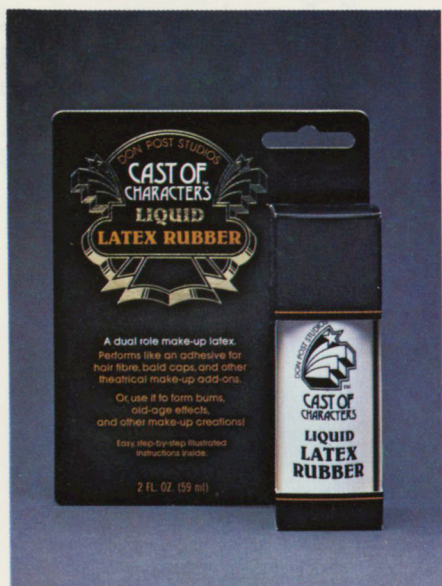
4031 IMAGI-NAILS™



CLENS™



NATURAL HAIR FIBRE



LIQUID LATEX



NOSES

4025 PIRATE EYE PATCH



BALD CAP & SKIN HEAD

HAIR FIBRE: 4041 Black, 4042 White, 4043 Grey, 4045 Lt. Brown, 4046 Red Brown, 4047 Salt & Pepper.

CLENS™: 4201 8oz. size 4202 2oz. size

LIQUID LATEX: 4071 2oz. size

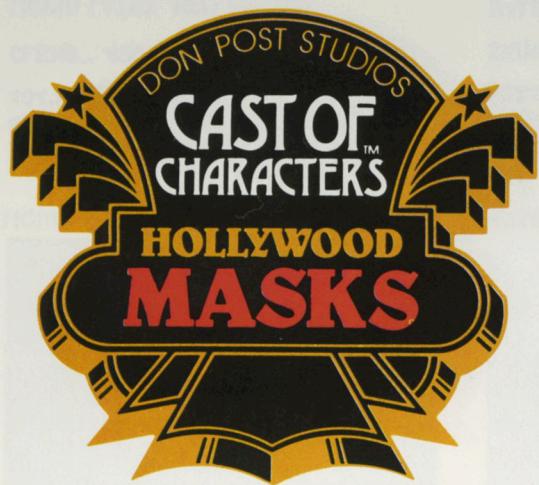
NOSES: 4021 Small Red Clown Nose, 4022 Large Red Clown Nose, 4023 Cyan nose, 4024 Witch Nose.

SKINHEAD: 4001 Flesh, 4002 White

BALD CAP: 4003 Flesh, 4004 White

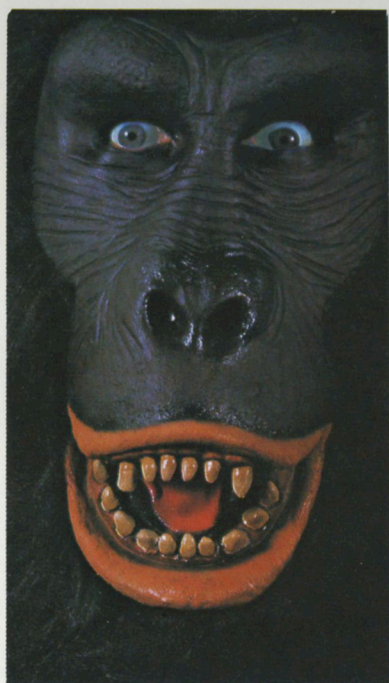
NEW!



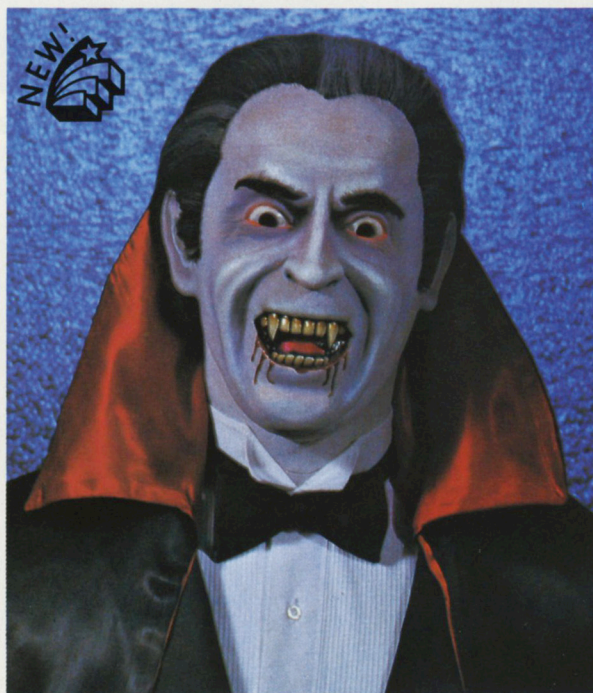


1000 SERIES

REPORTER: "Welcome back ladies and gentlemen. Here they come, **Don Post's "Premiere" Masks**. This custom line series offers detailing and realism normally found in Feature Films. Let's take a moment to see the arrivals. Now passing by our cameras is the inimitable **Custom Gorilla** accompanied by his co-star **Yeti**. Wait!, coming up next is the **Vampire**, a legend of his time!"



1032 CUSTOM GORILLA



1001 VAMPIRE



1031 YETI



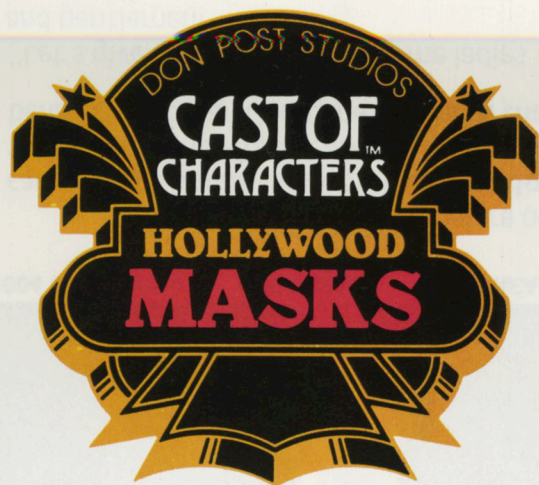
1004 QUASIMODO

1013 WIZARD

1023 NEANDERTHAL

REPORTER: "Standing before our cameras and fans is the noble **Quasimodo** and the omnipotent **Wizard**, and speaking on their behalf is that Man Gone Ape, **Neanderthal**."

"Let's give them a warm welcome ladies and gentlemen!"



950 SERIES

REPORTER: "Back by popular demand are these wicked creatures shrouded in black velour hoods. This line made such a hit last year that three new personalities are making their '83 Debut.'

"Stepping forward is the slithery **Reptillia** and his evil hearted companions **Grimsley** and **Woodlock**. Also attending this Gala Premiere are **Dark Angel**, **D.K.**, and the infamous **Werewolf** and **Kongo**."



958 REPTILLIA



959 GRIMSLEY



953 DARK ANGEL



956 WOODLOCK



952 KONGO

951 WEREWOLF



955 D.K.

4100 SERIES ACCESSORIES



GORILLA FEET
4101



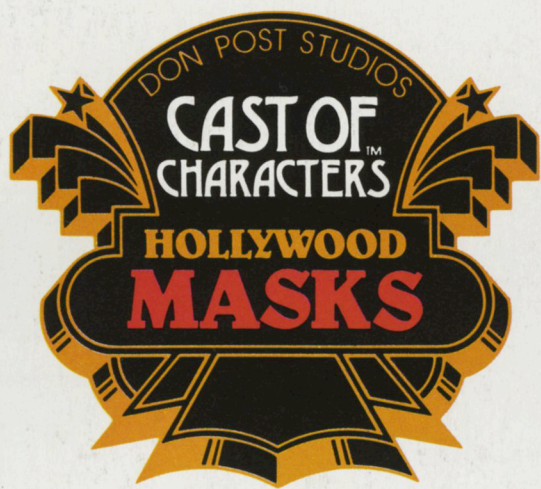
WEREWOLF HANDS
4103



GORILLA CHEST
4114



GORILLA HANDS
4102



900 SERIES

REPORTER: "Just arriving are the stars from our '**Custom Creatures**' Series. These Overhead Latex Masks have always captured the audiences appeal. Certainly with no exception is **Schizoid**, a new rising star in this series."

REPORTER: "Coming into view is **Sargoth**. It is obvious his managers have changed his image. **Mummy**, would you like to comment on his new look?"

MUMMY: "Well, **Mack**, it looks fantastic as does all the cast in the **900 Series**."



901 OLD VAMPIRE



919 MEDUSA



909 SCHIZOID



904 MUMMY



920 AESOP



908 SARGOTH

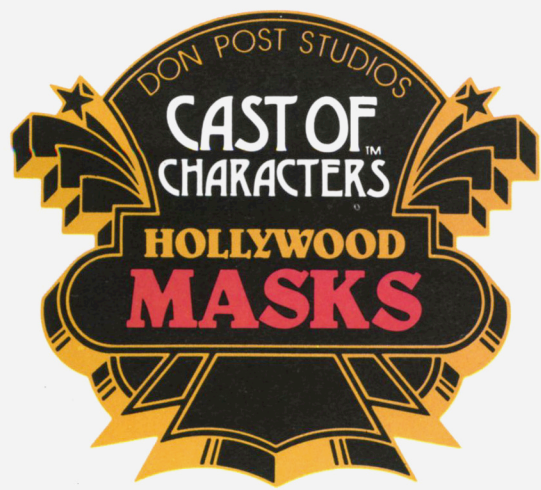


921 BIG TOP



922 FEARLESS LEADER





800 SERIES

REPORTER: "This is such an exciting event friends and there is still lots more to come. This years line is much more colorful than in the past and just to make a point, moving into the lights is a colorful character himself. The wild and crazy **Razooly**. What a hit!

". . . and of course not to be outdone, is the wicked **Nosferatu** in the flesh. These Full Overhead creations truly belong to the **Masquerade Scene**."



818 RAZOOLY



805 NOSFERATU



816 TANK



804 SKULL



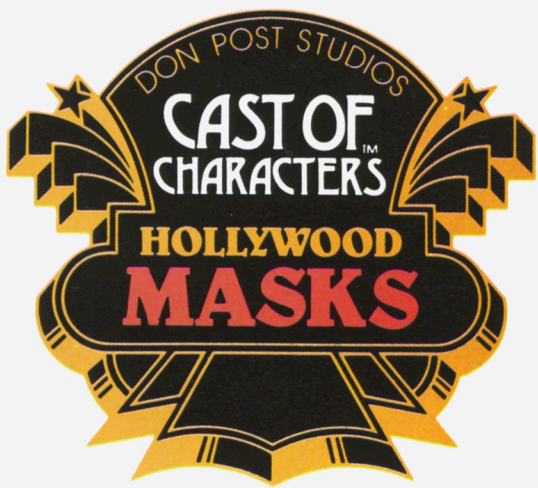
813 TOR JOHNSON

817 PETER

REPORTER: "Next to me now, is **Tor Johnson**, America's most popular mask character and the ever cunning **Peter**. What would you like to say to all the fans out there?"

TOR: "We're looking forward to 1983 and all the great things to come at Don Post Studios."

REPORTER: "Thank you gentlemen. Let's see who will be coming up next to speak with us . . ."



300 SEREIS

REPORTER: "It's Don Posts 'Favorite Fantasies' that are beginning to arrive. These Overhead Latex Masks offer great fun that is priced right.

"Hamming it up in front of our cameras are four crazy ghouls. **Werewolf**, **Bones**, **Devil** and the **Monster**. Also stealing the show is **Tramp**, **Chimp**, **Old Man**, and **Old Woman**, definitely crowd pleasers!"



NEW!
321 TRAMP



302 OLD MAN



320 CHIMP

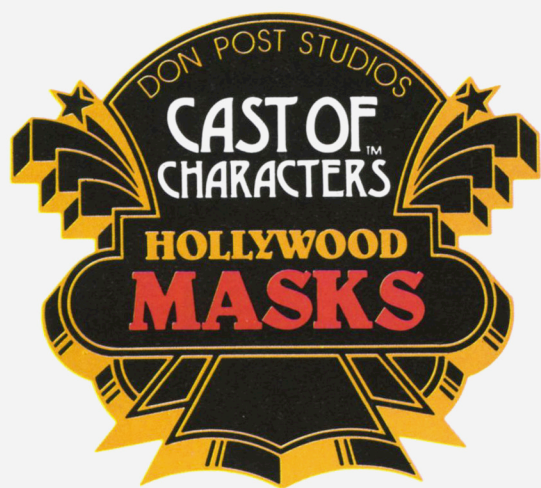


303 OLD WOMAN



315 WEREWOLF 309 MONSTER

317 BONES 304 DEVIL



150 SERIES

REPORTER: "Stepping from their limousines are the last few arrivals. Coming closer to our cameras is the distinguished **Old Man**. The fans are surrounding him and his lovely partner the **Old Woman**. Doesn't he look great this year!"

"Working their way through the crowd are the **Witch** and **Mummy**, certainly aging gracefully over the years. Listen to the crowd scream with laughter as the ever favorite **Goof** passes by. And, but of course, making a fashionable late entrance is a newcomer the **Bandit**. He certainly is a scene stealer ladies and gentlemen."



152 OLD MAN



153 OLD WOMAN



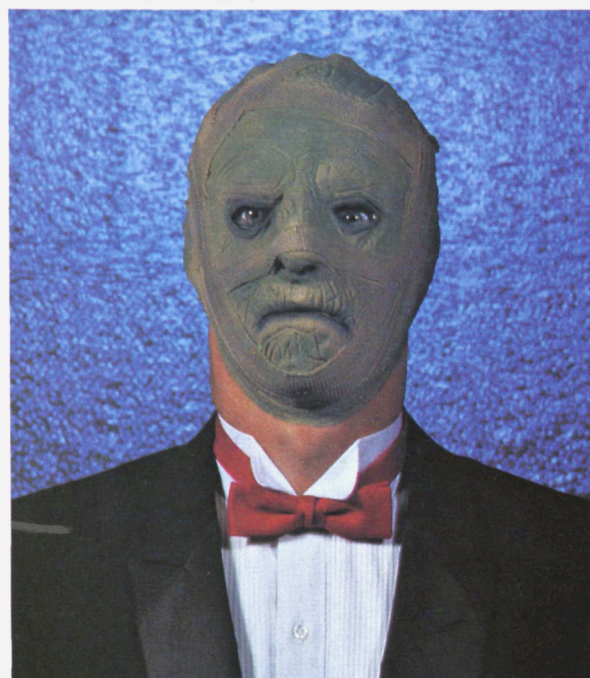
155 WITCH



157 BANDIT

REPORTER: "As the **Don Post Studios Premiere** comes to a close, I want to thank you for being a part of this memorable event. Until we meet again, . . . 'Happy Masquerading'!"

"Signing off, this is your Don Post Reporter, **Mack Skerade**".



158 MUMMY



154 GOOF

PROMOTIONAL SALES AIDS

Don Post Studios is proud to announce the expansion of their advertising and promotions department. It has been established to help you become more aware of the exciting things happening at Don Post Studios and to help you better prepare for your advertising and promotional needs. Shown are just a few of our current sales aids. Look for more coming through-out 1983.



- ★ **FOLD-UP, CORRUGATED HEADSTAND.** EASY TO ASSEMBLE. GREAT FOR DISPLAY. #5001
- ★ **A BEAUTIFUL, FULL COLOR 17"x24" MAKE-UP POSTER.**
- ★ **COLORFUL SHELF TALKERS, OR COUNTER CARD** APPROXIMATE SIZE, MAIN PANEL, 2"x8".
- ★ **ADVERTISING AND PROMOTIONAL KIT** FEATURES PREPARED ADS, LOGOS, PHOTOGRAPHS AND ART WORK FOR REPRODUCTION.

Behind the Scenes

DON POST: "For nearly half a century **Don Post Studios** has manufactured the finest **Latex Masks** in the world. Each of our characters is hand sculpted, then molded and cast in only the highest quality materials available. This method of **Handcrafted Quality** has made us **internationally famous**.

"This year we are proud to say we have expanded our main facility to over 35,000 square feet, dedicated solely to the production and distribution of our masks and make-up. To also facilitate a continued and growing demand, a new **Creative Sales and Supplies Department** has been created. This added service will further bring the talents of Don Post to the entertainment industry. Since it's inception, the department has aided in the production of more than **30 films** and **television projects** including **Halloween III: Season of the Witch™** and the 1984 Universal City Studios release of **Dune™**, a Dino De Laurentiis Film.

"In addition to the expansion, a complete professional **Graphic Arts and Marketing Department** has been initiated. This will allow our customers availability to creative and quality **Graphics, Promotions** and **Sales and Marketing support**.

"**Don Post Studios** is looking forward to **1983** and continued growth, maintaining the tradition of producing **Quality Handcrafted Products**. To those skilled and talented people at Don Post as well as those who enthusiastically support and purchase our products, **sincere appreciation** and **thanks go to you.**"

Our special thanks to:

casa de tuxedo by Mr. S
Formal dress attire
Glendale, California

Bel-Air Livery
Limousine service.
Beverly Hills, California

1. Skilled artisans hand-sculpt each character before production begins.

2. Production molds are also all handmade.

3. Considerable time and effort is put into the development of each product.

4. Each step in the production of our masks requires hands-on involvement.

5. Attention to detail makes our products so unique.

6. Every mask is carefully trimmed and detailed by hand.

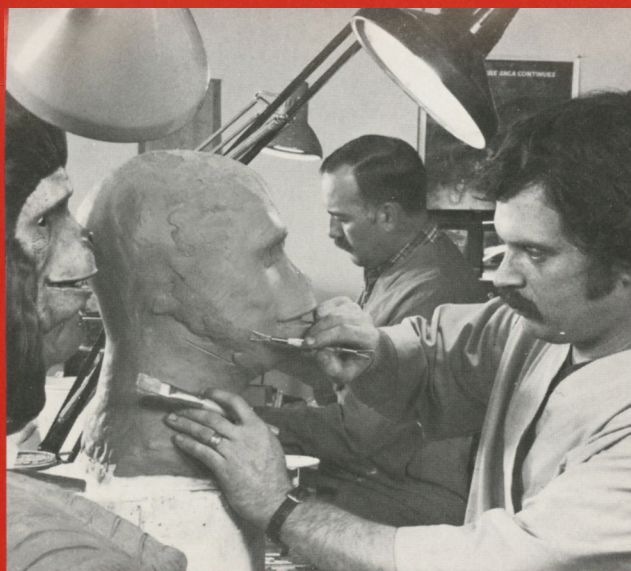
7. Trained airbrush artists create the realism so indicative of the Don Post "Look."

8. Natural Hair Fibre is applied diligently by hand to many of our custom masks.

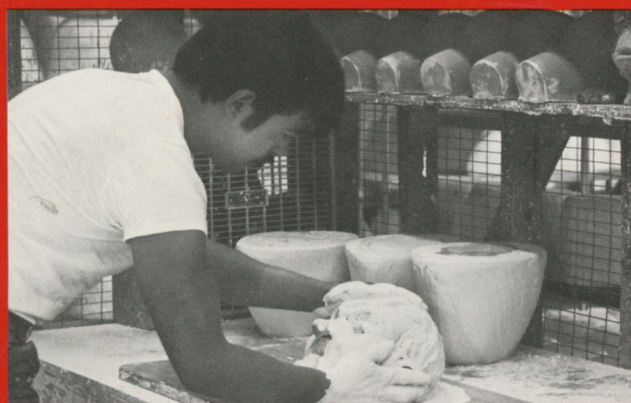
9. Many of our product concepts and all of our sales and marketing aids are developed by our in-house art department.

DON POST STUDIOS, INC.
8211 LANKERSHIM BLVD.
NORTH HOLLYWOOD, CA 91605
Business Hours: 7:00 A.M.-4:30 P.M. (PST)
(213) 768-0811

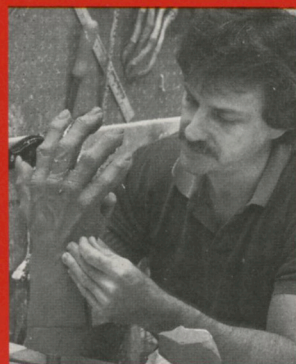
TM © 1983 Don Post Studios, Inc. No. Hollywood, CA 91605.
All Rights Reserved. Made and Printed in U.S.A.



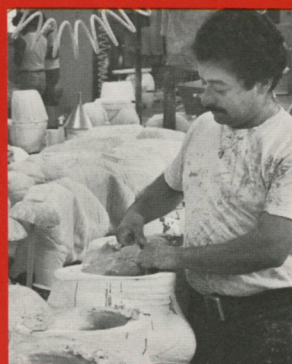
1



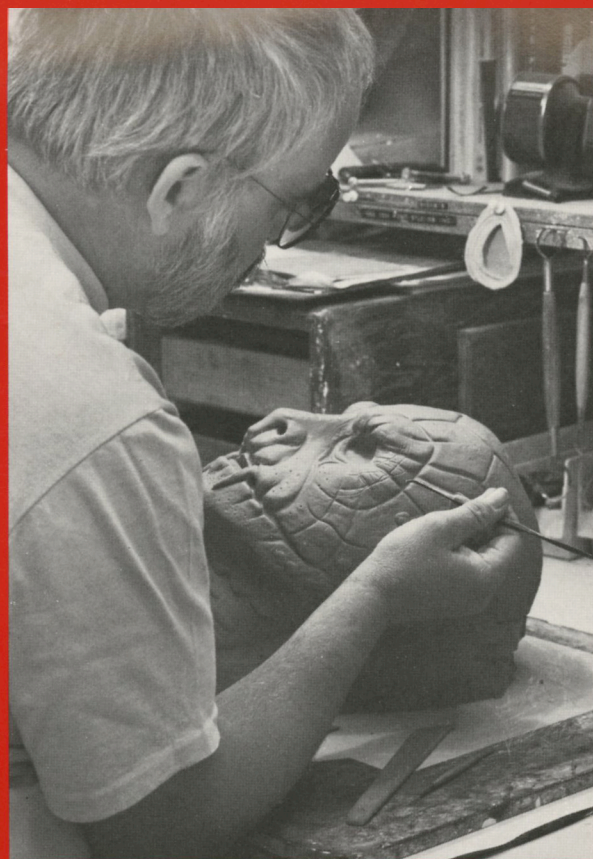
2



3



4



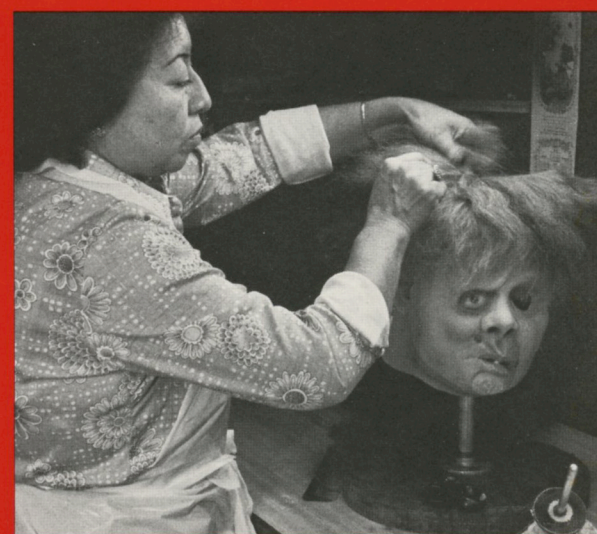
5



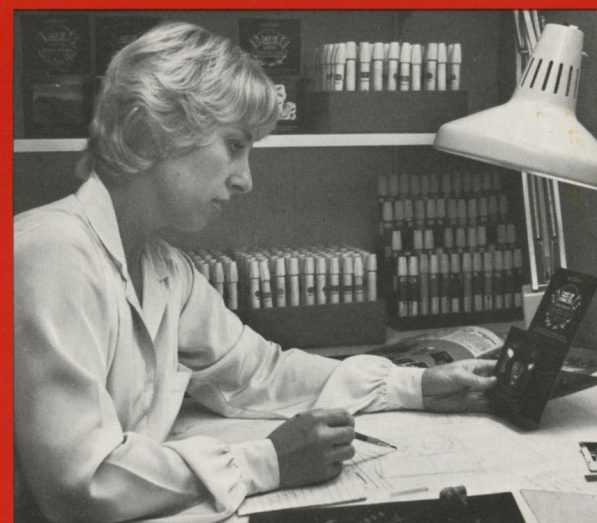
6



7



8



9



DON POST STUDIOS, INC.
8211 LANKERSHIM BLVD.
NORTH HOLLYWOOD, CA 91605
Business Hours:
7:00 A.M.-4:30 P.M. (PST)
(213) 768-0811

AUTHORIZED DEALER